

Products Description

AI Chipset Strong Algorithm

This model supports *DSM* (driver status monitoring) and *ADAS* (advanced driving assistant system). *BSD* (blind spot detection) is under development. Will be a smart mini tool for your fleet management.



Supports Max 4CH Video Recording

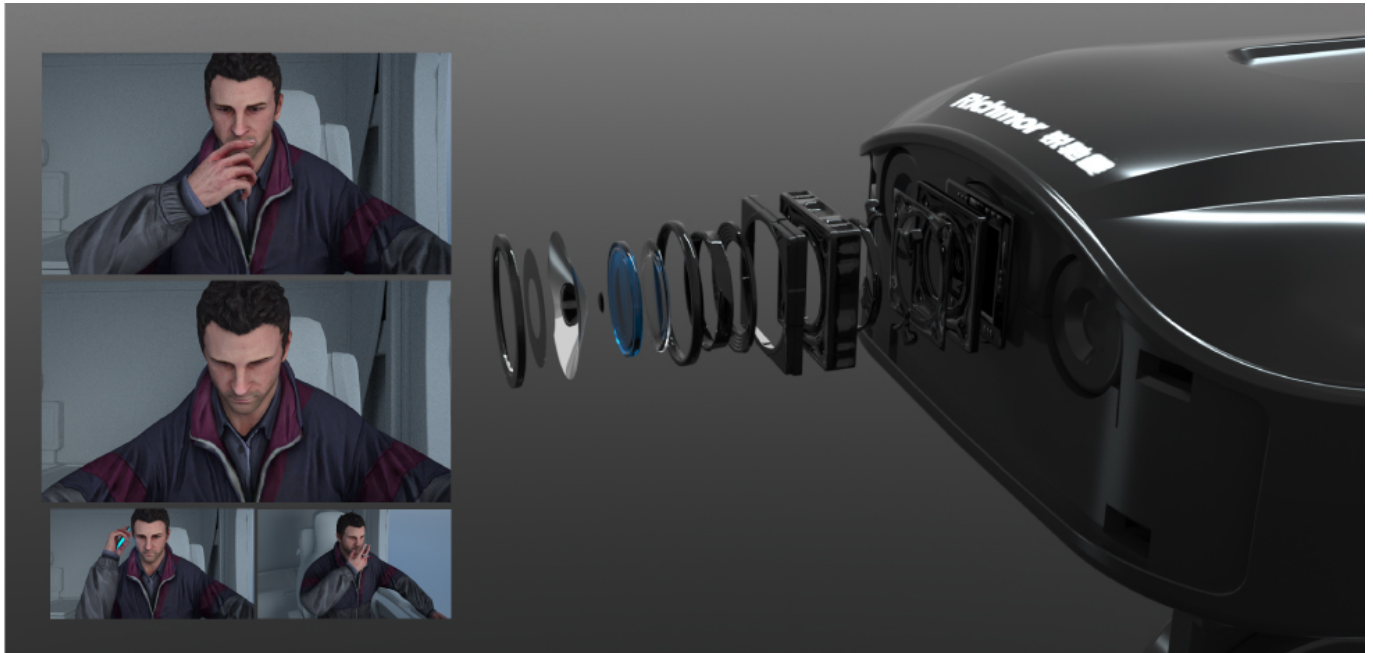
DSM camera built-in, supports 2~3 external cameras, comprehensive monitoring with AI function.



Integrated DSM camera & DSM algorithm

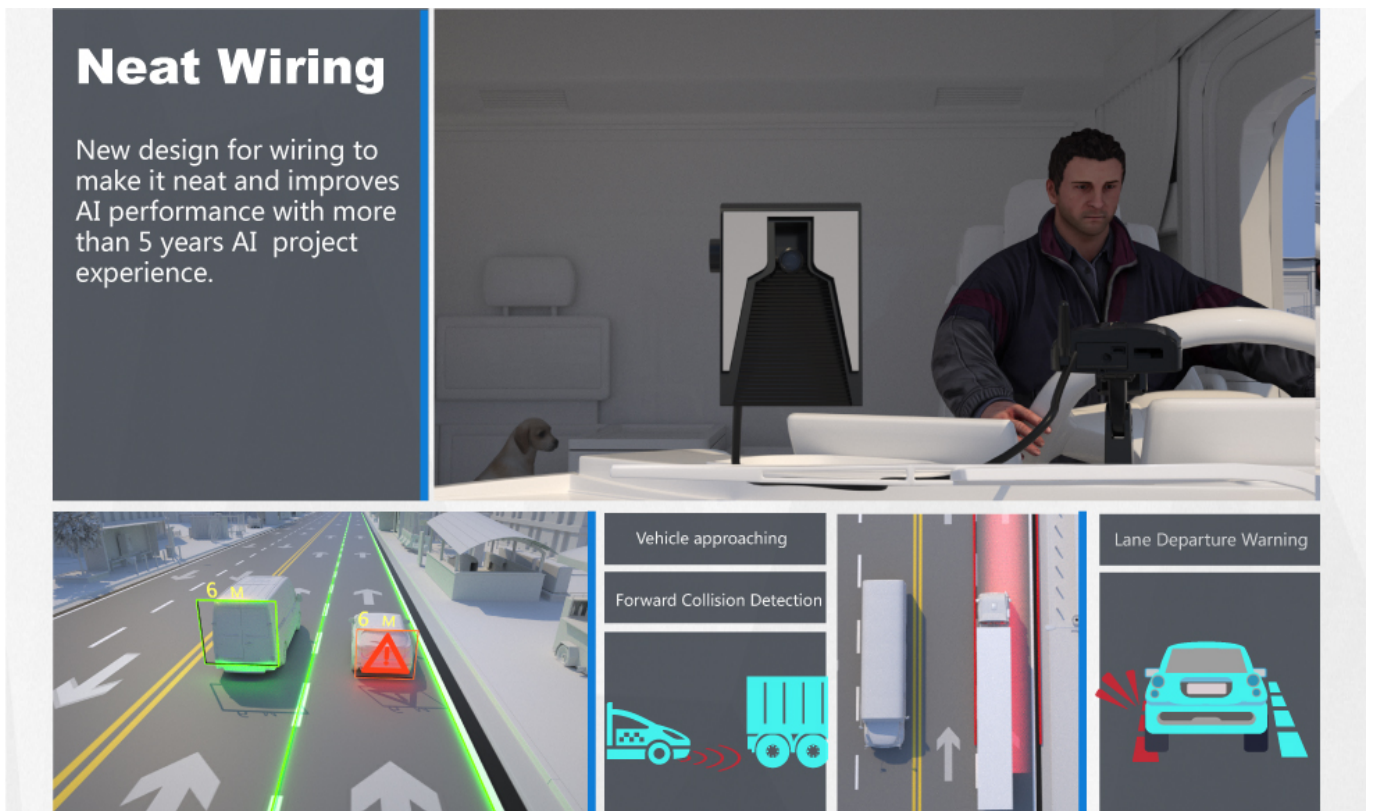
Dangerous driving behaviors detection includes Fatigue(eye closed, yawning), Distraction(looking left or

right for a while), Smoking, Making a call, driver abnormality, etc.



Integrated ADAS algorithm

ADAS function for optional. Once connect to ADAS camera, supports FCW (forward collision warning), HMW (headway monitoring), LDW (lane departure warning), and PCW (pedestrian collision warning).



Driver Facial Recognition



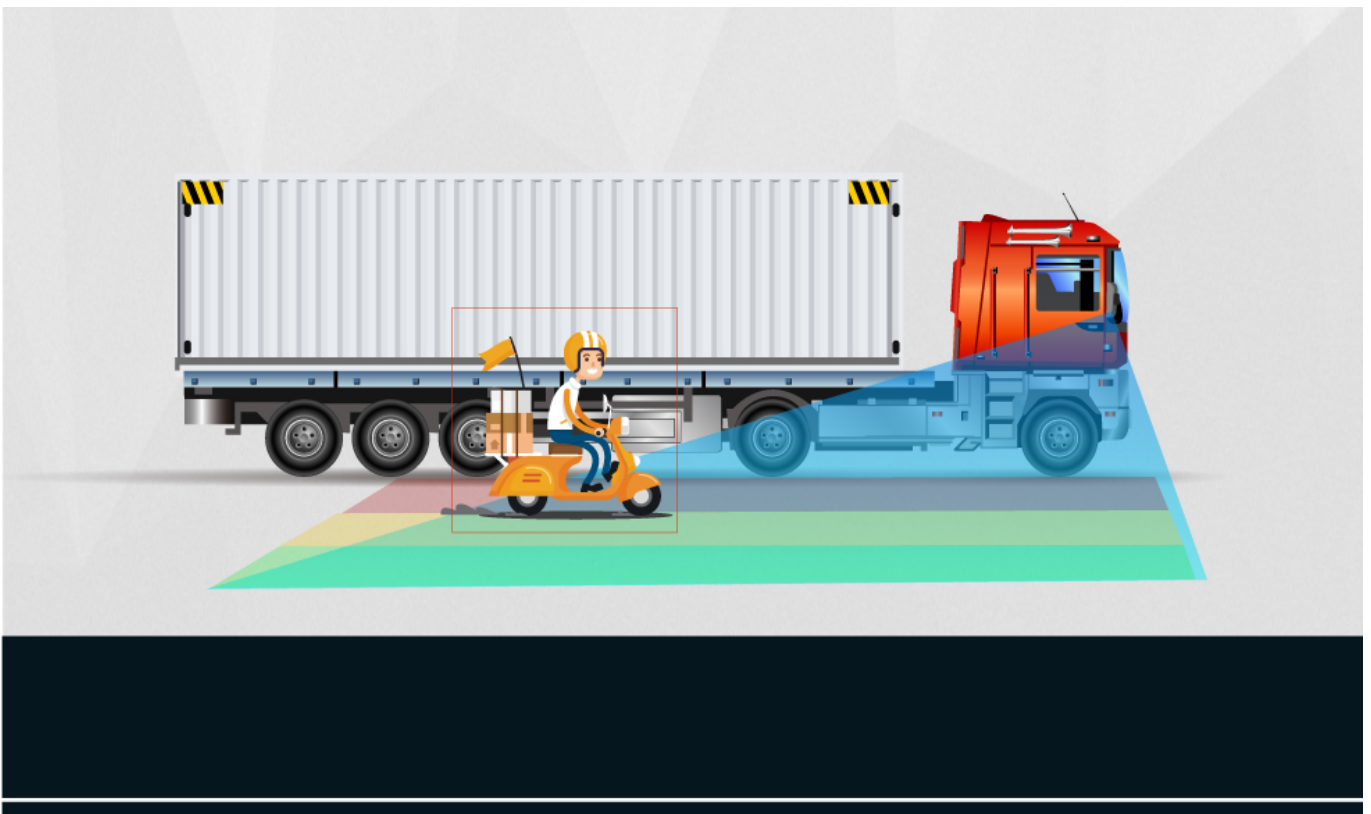
Driver face recognition

Driver ID Face recognition benefits to the attendance of fleet management: avoid illegally replacing shifts, non-compliant drivers, to regulate drivers and operation management.



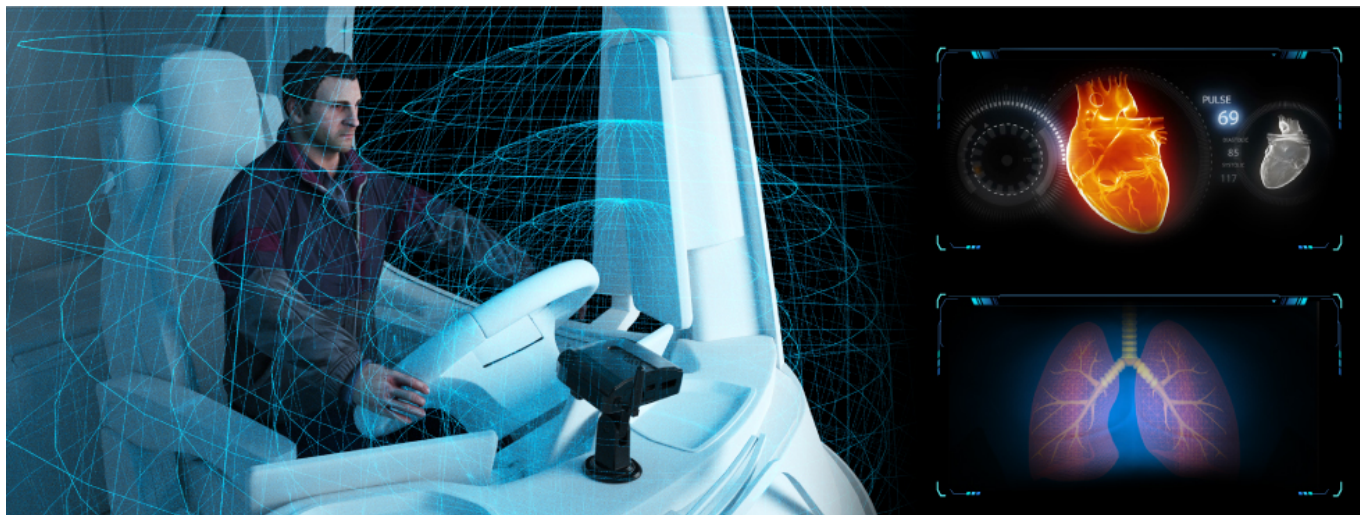
Optional BSD Blind Spot Detection

Connect BSD camera for blind area detection and voice reminder: pedestrians, motorcyclist, bicyclist detection. Voice reminder inside and outside with a light flashing speaker. (This function is under development. Contact salesperson for confirmation~)



Optional Driver Physiological State Detection

Optional to integrate the radar which detects and analyses driver's heart beat and breathe. The most effective way to monitor driver state with video algorithm DSM.



4G + GPS + G-sensor + ADAS + DSM + Speaker + MIC

Super mini size, easy installation and short wiring design to save time and labor cost.



Dual-SD card recording, Seamless loop recording

Dual SD card storage, max 512GB each,. Support hot swap.



WIFI APP-Check

Optional WIFI, for App checking and configuration. Convenient for device operation and maintenance.



Product Parameters