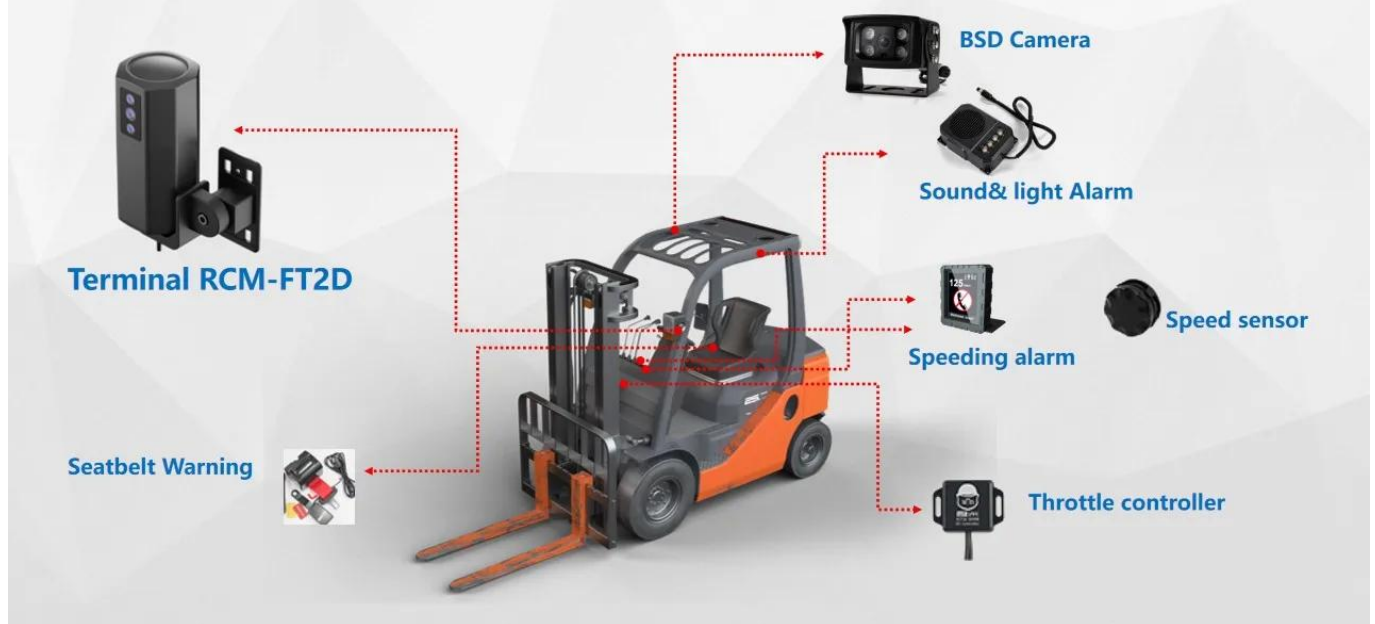


Forklift Hardware

Installation diagram



All AI Integrated Terminal

Waterproof Level: **IP67**, **Explosion proof**, **High heat dissipation** and easy installation



H.265/H.264 compression mode

Built-in DMS camera

Built in 4G/WIFI module

BD/GPS module



Forklift DVR System



Product Parameter

.

Basic parameter	Network format	4G TDD-LTE, FDD-LTE/full network access
	Memory	2Gb
	Integrated camera	AHD 1080p camera (IF DMS is Infrared black and white camera)
Hardware features	position	Dual-mode positioning, supports GPS+Beidou; positioning accuracy $\leq 10\text{m}$ (95% probability); Positioning time, hot start $\leq 5\text{s}$, cold start $\leq 45\text{s}$
	WiFi (optional)	2.4G; IEEE 802.11b/g/n
	MIC	Single microphone, supports echo and noise cancellation
	G-sensor	3-axis gravity acceleration sensor
3G/4G	module type	Support built-in 3/4G wireless transmission function, TDD-LTE, FDD-LTE
Interface	video interface	Expansion harness supports expansion of 1-channel video
	SIM card holder	SIM card holder*1 (medium card)
	Communication Interface	Integrated 1-way RS232 serial port
	Can (optional)	Can be scalable
Antenna	BD/GPS antenna	Built-in/external antenna available
	4G antenna	Built-in antenna
	WIFI antenna	Built-in antenna
Power	power input	9-110V wide voltage input
	Working current	12V 0.35A without infrared (MAX)
	low power mode	12V 0.5A turns on infrared (MAX)

AI Function

Authorized Operation Face Recognition

Face recognition are required before operation. Computer image processing technology is used to extract portrait feature points from the video for intelligent analysis to prevent drivers from skipping work and other unregistered drivers from operating the vehicle.



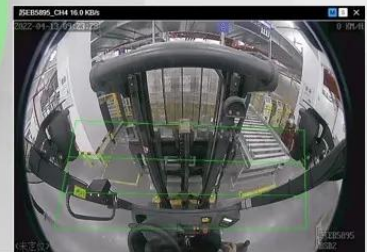
Driver Monitoring Status Analysis

Dangerous behaviors will be detected by DMS camera such as Fatigue(eye close, yawn), distraction, smoking and calling, also will send voice alarms to drivers and alarms will be uploaded into the operation center.



Blind Spot Detection

BSD camera is optional. People in blind spot area can be detected. When people are detected in blind area, there will be different level alarms including sound and lamp. Once people are in the impact zone, The forklift automatically brakes to stop (with throttle controller)



Speed Sensor and Alarm Reminder (R-WATCH)

Speed perception will be carried in a field without positioning. It also provides voice and beep sound prompts for speeding, and can display alarm type and vehicle speed



Safety Seatbelt Monitoring

After installing the seat belt warning device, the vehicle will not be started if the seat belt is not fastened.



- Real-time monitoring of non-fastening of seat belts and alarm reminders will be carried out.
- Violation alarms will be uploaded to the platform for statistical analysis to ensure the safety of forklift operators.



Vehicle Platform management

Other Functions

Data recording

Switching time and working time, loading time and mileage



Accident recording

Driver identity information, time of occurrence, location and other information



Reminder function

Forklift maintenance ,annual inspections, operator certificate and equipment expiry reminders



Vehicle dispatching system

Reasonable calls based on resource conditions, avoiding uneven distribution of resources



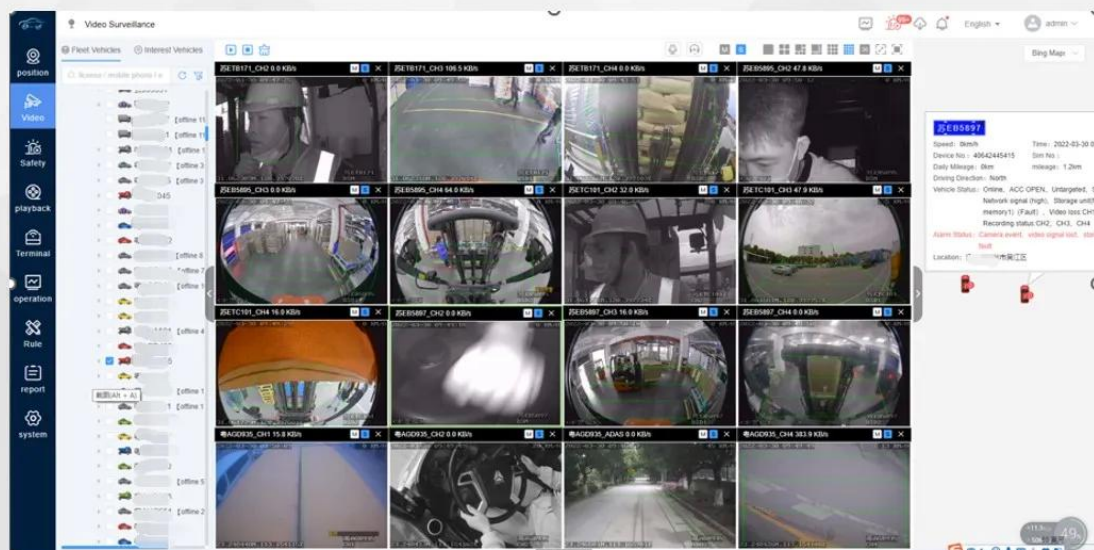
Vehicle Management Software(VMS)

Management and scheduling: All vehicle videos, GPS information, alarm information, video management, user management, etc.



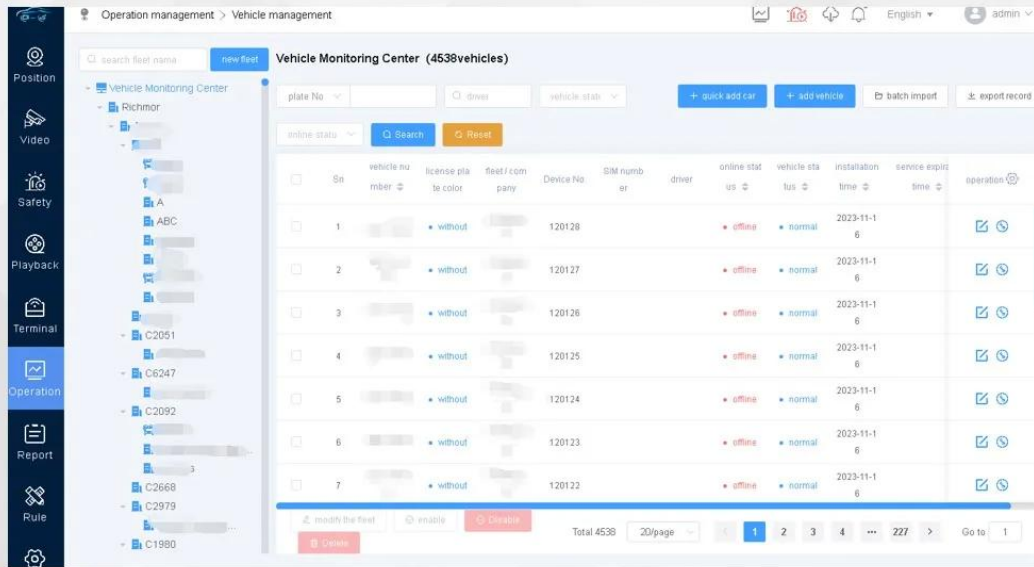
Live Video

Real-time video browsing, supports simultaneous browsing of multiple screens, vehicle location information, equipment status, GPS map display, etc.



Operation Management

Evidence query such as video loss, offline, GPS abnormal and other vehicle information



The screenshot displays the 'Vehicle Monitoring Center' interface with 4538 vehicles. The left sidebar contains navigation options: Position, Video, Safety, Playback, Terminal, Operation (selected), Report, Rule, and Settings. The main area shows a table of vehicle data with columns for Sn, vehicle number, license plate color, fleet/company, Device No., SIM number, driver, online status, vehicle status, installation time, service expiration time, and operation. The table lists 7 vehicles, all with 'offline' status and 'normal' vehicle status. Below the table, there are buttons for 'modify the fleet', 'enable', and 'disable', along with a 'Total 4538' count and pagination controls.

Sn	vehicle number	license plate color	fleet/company	Device No.	SIM number	driver	online status	vehicle status	installation time	service expiration time	operation
1		without		120128			offline	normal	2023-11-1 6		
2		without		120127			offline	normal	2023-11-1 6		
3		without		120126			offline	normal	2023-11-1 6		
4		without		120125			offline	normal	2023-11-1 6		
5		without		120124			offline	normal	2023-11-1 6		
6		without		120123			offline	normal	2023-11-1 6		
7		without		120122			offline	normal	2023-11-1 6		

Solution Advantages

- AI function, efficient, intelligent and comprehensive management and monitoring of fleet operations;



Easy Installation



Support Android/iOS/WEB



Support APP for configuration



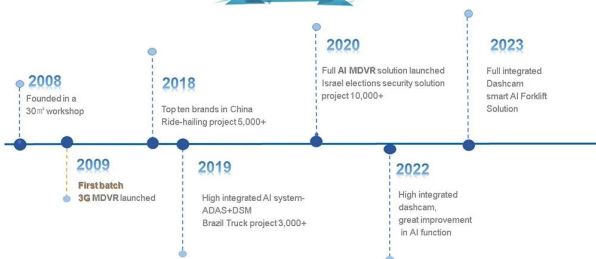
Our Company



Shenzhen Richmor Technology Development Co., Ltd. is a High-tech manufacturer specialized in digital and intelligent mobile video products, with rich experience in developing, producing and after-sales service over 16 years. Products mainly include SD card MDVR, Hard disk MDVR, MNVR, True-AI MDVR, dashcam, cameras, monitors, etc. We concentrate ourselves on providing customers with the most advanced technologies and products.



Development



Office and R&D



Workshop



Certificates



Exhibition

