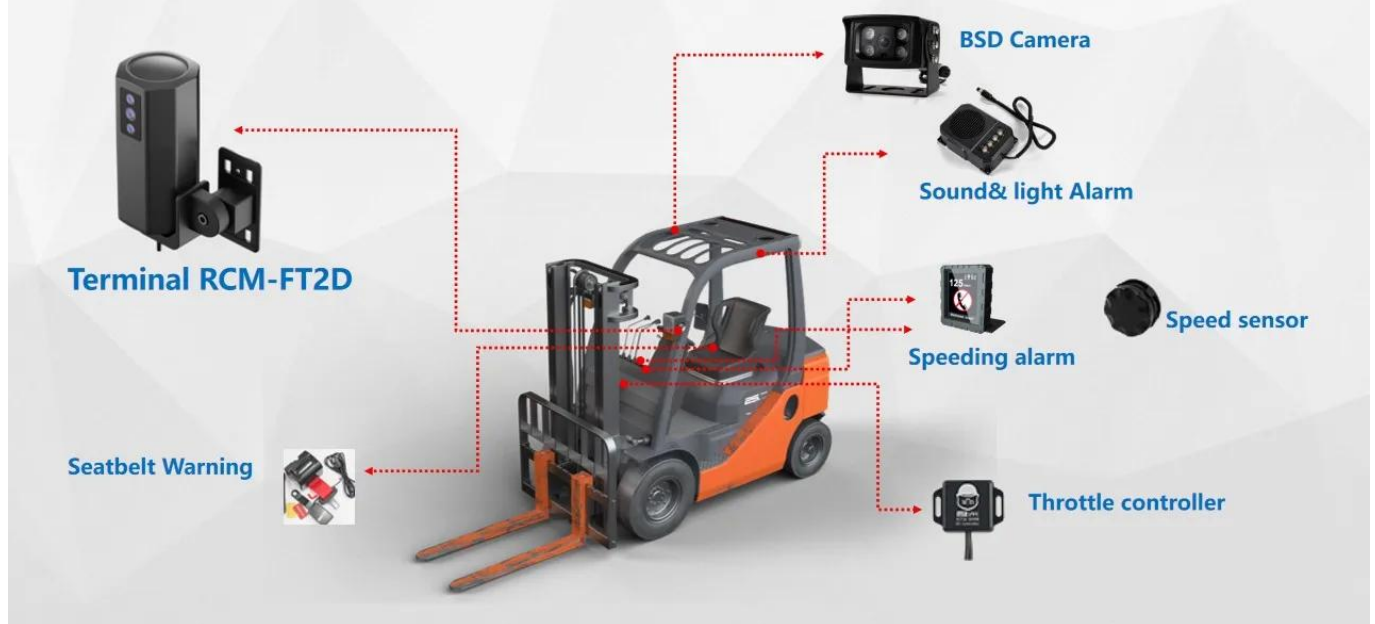


## Forklift Hardware

### Installation diagram



### All AI Integrated Terminal

Waterproof Level: **IP67**, **Explosion proof**, **High heat dissipation** and easy installation



H.265/H.264 compression mode

Built-in DMS camera

Built in 4G/WIFI module

BD/GPS module



# Forklift DVR System



## Product Parameter

---

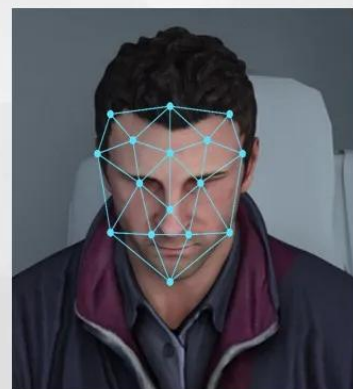
.

Basic parameter	Network format	4G TDD-LTE, FDD-LTE/full network access
	Memory	2Gb
	Integrated camera	AHD 1080p camera (IF DMS is Infrared black and white camera)
Hardware features	position	Dual-mode positioning, supports GPS+Beidou; positioning accuracy $\leq 10\text{m}$ (95% probability); Positioning time, hot start $\leq 5\text{s}$ , cold start $\leq 45\text{s}$
	WiFi (optional)	2.4G; IEEE 802.11b/g/n
	MIC	Single microphone, supports echo and noise cancellation
	G-sensor	3-axis gravity acceleration sensor
3G/4G	module type	Support built-in 3/4G wireless transmission function, TDD-LTE, FDD-LTE
Interface	video interface	Expansion harness supports expansion of 1-channel video
	SIM card holder	SIM card holder*1 (medium card)
	Communication Interface	Integrated 1-way RS232 serial port
	Can (optional)	Can be scalable
Antenna	BD/GPS antenna	Built-in/external antenna available
	4G antenna	Built-in antenna
	WIFI antenna	Built-in antenna
Power	power input	9-110V wide voltage input
	Working current	12V 0.35A without infrared (MAX)
	low power mode	12V 0.5A turns on infrared (MAX)

## AI Function

### Authorized Operation Face Recognition

Face recognition are required before operation. Computer image processing technology is used to extract portrait feature points from the video for intelligent analysis to prevent drivers from skipping work and other unregistered drivers from operating the vehicle.





## Driver Monitoring Status Analysis

Dangerous behaviors will be detected by DMS camera such as Fatigue(eye close, yawn), distraction, smoking and calling, also will send voice alarms to drivers and alarms will be uploaded into the operation center.



## Blind Spot Detection

BSD camera is optional. People in blind spot area can be detected. When people are detected in blind area, there will be different level alarms including sound and lamp. Once people are in the impact zone, The forklift automatically brakes to stop (with throttle controller)



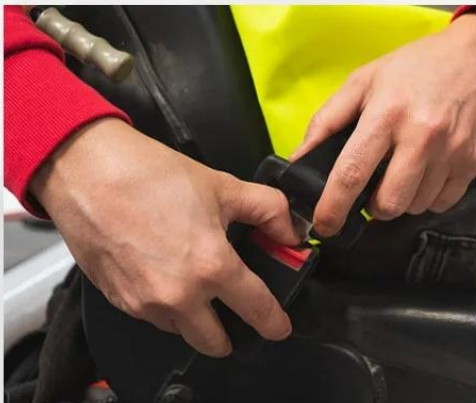
## Speed Sensor and Alarm Reminder (R-WATCH)

Speed perception will be carried in a field without positioning. It also provides voice and beep sound prompts for speeding, and can display alarm type and vehicle speed



## Safety Seatbelt Monitoring

After installing the seat belt warning device, the vehicle will not be started if the seat belt is not fastened.



- Real-time monitoring of non-fastening of seat belts and alarm reminders will be carried out.
- Violation alarms will be uploaded to the platform for statistical analysis to ensure the safety of forklift operators.



# Vehicle Platform management



## Other Functions

### Data recording

Switching time and working time, loading time and mileage



### Accident recording

Driver identity information, time of occurrence, location and other information



### Reminder function

Forklift maintenance ,annual inspections, operator certificate and equipment expiry reminders



### Vehicle dispatching system

Reasonable calls based on resource conditions, avoiding uneven distribution of resources



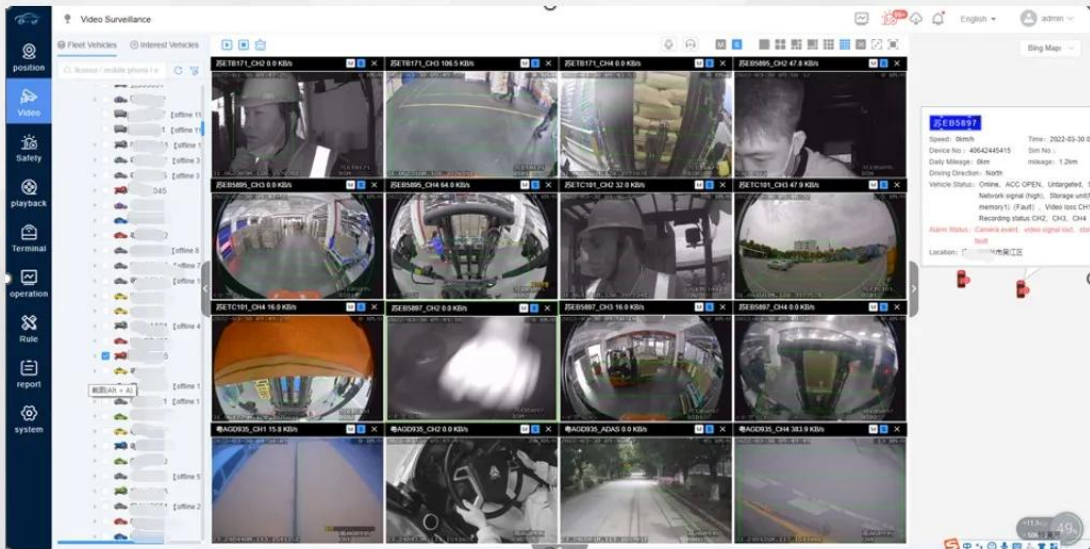
## Vehicle Management Software(VMS)

Management and scheduling: All vehicle videos, GPS information, alarm information, video management, user management, etc.



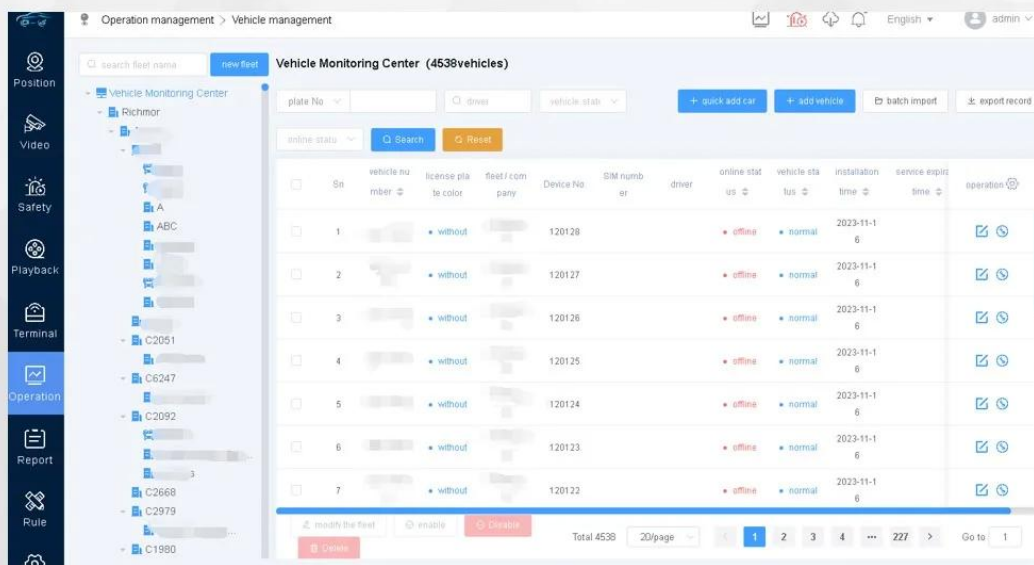
## Live Video

Real-time video browsing, supports simultaneous browsing of multiple screens, vehicle location information, equipment status, GPS map display, etc.



## Operation Management

Evidence query such as video loss, offline, GPS abnormal and other vehicle information



## Solution Advantages

- ◆ AI function, efficient, intelligent and comprehensive management and monitoring of fleet operations;



Support Android/IOS/WEB



Easy Installation



Support APP for configuration



## Company Profile

**Shenzhen Richmor Technology Development Co., Ltd.** is a TOP high-tech enterprise/manufacturer specialized in digital and intelligent mobile video surveillance products, with 15-year rich experience of developing, producing and selling. Products cover 3G 4G SD card/HDD mobile DVRs, ADAS DSM BSD AI mobile DVRs/Dash cams, Body cams, Smart touch screen, HD vehicle cameras etc. As a professional manufacturer, we devote ourselves to providing customers with most advanced technologies and products with highest quality.







# 01. Our company



# 02. Office area

# 03. Service team



# 04. Factory Photos

