

## Ride-hailing/Taxi Fleet management

### Mini HD dual-len dashcam

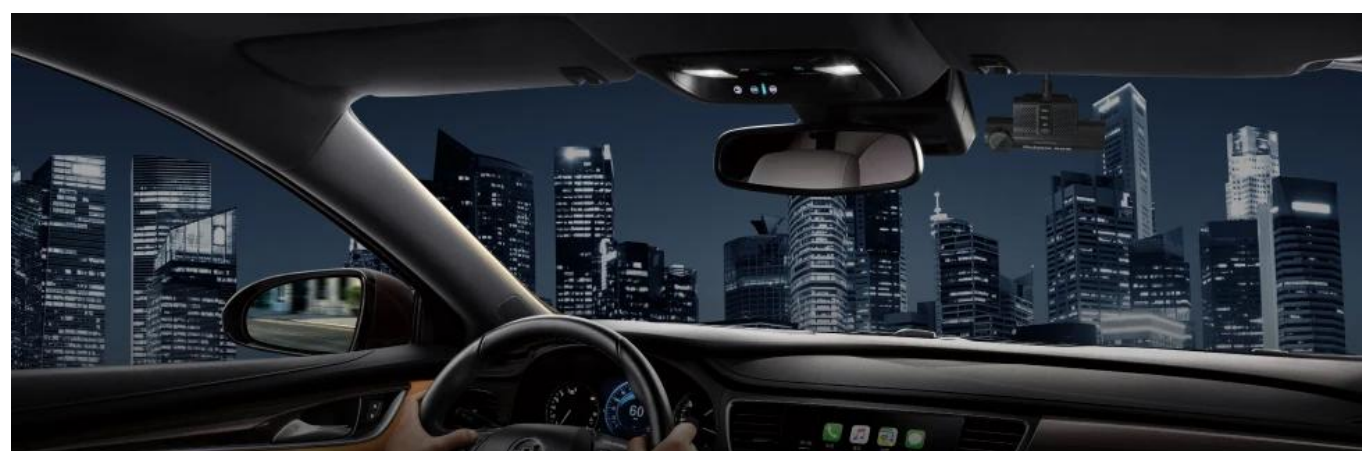


The dashcam is a sleek, black, cylindrical device with a lens on the left and a control panel on the right. The control panel features a small screen displaying 'WIFI', 'REC', '4G', and 'OK'. The brand name 'Richmor' and its Chinese equivalent '锐驰摩' are printed on the side.

- 2CH 1080P
- 4G
- BD/GPS
- IO alarm
- Intercom
- WiFi AP
- G-Sensor

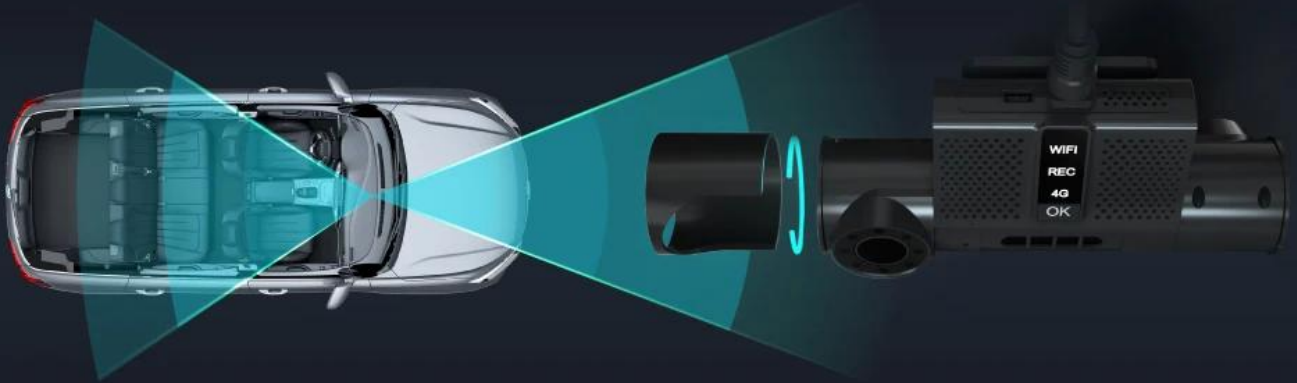
## Mini and Easy Installation

Just need to paste the device to windshield with 3M glue, save time and labor cost.



The image shows the interior of a car at night, with a city skyline visible through the windshield. The dashcam is mounted on the windshield, and the driver's hands are visible on the steering wheel. The car's dashboard and infotainment system are also visible.

## HD recording Dual 1080P



Front and cabin view, wide-angle lens. Lens can be adjusted 180°vertically, then fixed by structure.

## Pretty Night Vision

Cabin len with IR, support viewing at night.



## Mini All-in-One Design

Mental and ABS material as case, delicate, mini and firm. Industrial-level solution, reliable electromagnetic compatibility.



## 4G Remote Transmission

Professional fleet management softwares help you monitoring vehicles remotely through PC or mobile phone.





# Automatic Alarm

Integrated G-SENSOR, supporting automatic alarms to platform for abnormal shocks, collision, rollover, etc.

## Loop recording

Advanced loop recording technology, make sure enough space for recording.



## G-Sensor

When vehicle get hit, device snaps automatically.

## Anti-Thief Mode

Device will wake to take photo and send to APP to inform the owner when it get shocks under this mode.



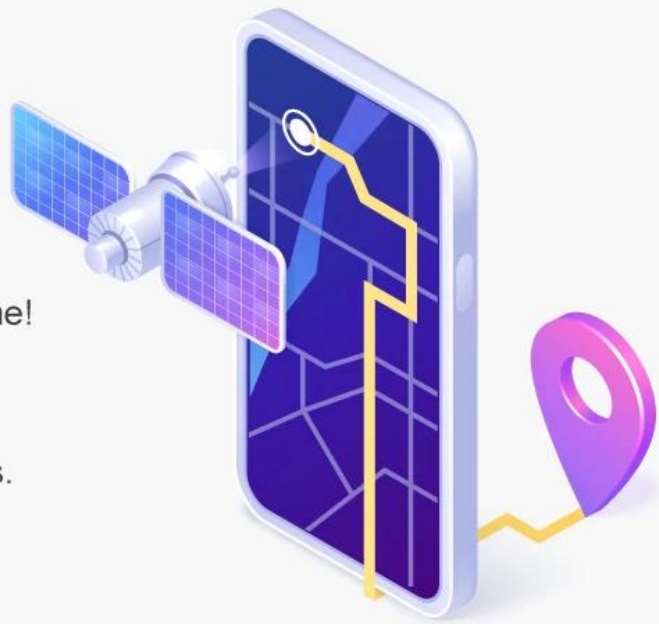
## Time-lapse video

1 frame per second recording, low power consumption under this mode.

## GPS/BD

Integrated GPS/BD,  
tracking your vehicles at any time!

Support routine management,  
max save 16 routines and areas.



## Panic Button

Integrated sound pick up and speaker, support voice recording and intercom,  
support panic button for sending alarms and photos.



voice record  
and intercom

# WIFI Hotspot

AP mode, support max8 devices at a time.  
Support phone connecting WIFI to do setting.



## Applications

Suitable for Ride-Hailing car/ uber/taxi, van, etc.



### Product Parameters

Product name	Dual len 1080P HD dashcam MDVR
Dual Len	Supports, front len 1080P, reverse len 1080P
Angle of len	Ajustable, 180 degree vertical
4G	Yes
Communication	TDD-LTE: B38/B39/B40/B41
Frequency	FDD-LTE: B1/B3/B8 WCDMA: B1
GPS	Yes
WiFi	Yes
Fleet management Platform	Free
Speaker	8Ω, 1W, with audio cavity
Microphone	Single microphone, support echo and noise elimination
G-Sensor	3-axis acceleration sensor



USB	Mini USB*1, support local upgrade or data backup, expandable external digital camera
Panic button	Mini panic button along with
SIM card slot	SIM card slot*1 (MICRO SIM)
TF card slot	TF card slot (For recording video)
Button	1 upgrade button, long press to upgrade
Indicator light	3
Power input	5-30V wide voltage input
Working temperature	-30°C~70°C
Size and weight	length: 115mm; max width: 57.5mm; thickness: 40mm.
Application	Taxi / Car / Online-Hailing / Van, etc.

## Company Profile



Shenzhen Richmor Technology Development Co., Ltd is a High-tech manufacturer specialized in digital and intelligent mobile video products, with rich experience in developing, producing and after-sell service over **16 years**. Products mainly include **SD card MDVR, Hard disk MDVR, MNVR, True-AI MDVR, dashcam**, cameras, monitors, etc. We concentrate ourselves on providing customers with the most advanced technologies and products.

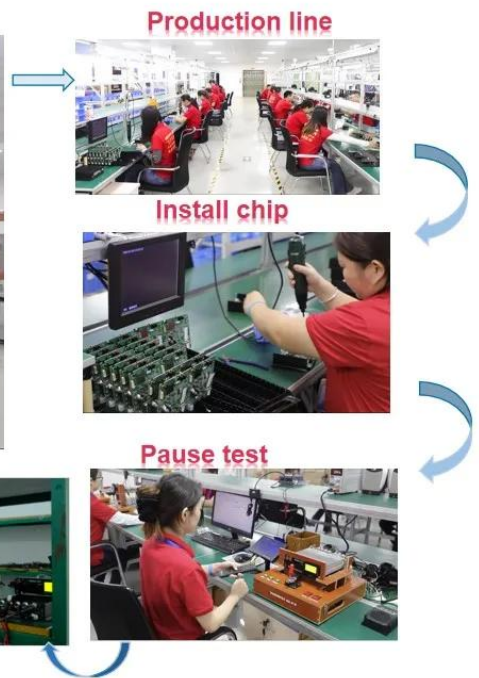




Office and R&D



Factory



Temperature test



Vibration test



Agine test



Pause test



