



### System Selling Points:

- 1) MDVR + AI All-In-One. Monitoring and Enhance Driving Safety at the same time.
- 2) Strongly Support ADAS+DSM+BSD. Further support HOD, 360 degree view, etc.
- 3) 8 channel full HD (1080P) video recording, H.265.
- 4) World first AI MDVR, 1.2T computing NPU ensures high accuracy and stable performance.

*Send us inquiry to get complete product presentation and competitive price!*

### Applications

Widely applied in bus, coach, truck, logistics field.





## What does this system combine?

MDVR + ADAS cam + DSM cam + BSD cam + inner&outer Speaker



## AI-Chipset MDVR 8CH Full HD + H.265 + GPS + 3G/4G + WIFI (optional)

Algorithm is written inside the MDVR chipsets.



## ADAS(Advanced Driving Assistance System)

Collision Warning/Passenger Detection/Lane Departure Warning Enhance driving safety, Avoid accidents!!





**DSM(Driver Status Monitoring)** Behavior Detection:  
*Fatigue/Distracted/Smoking/Calling* supported Language:  
*English/Russian/Spanish/Portuguese/customized*

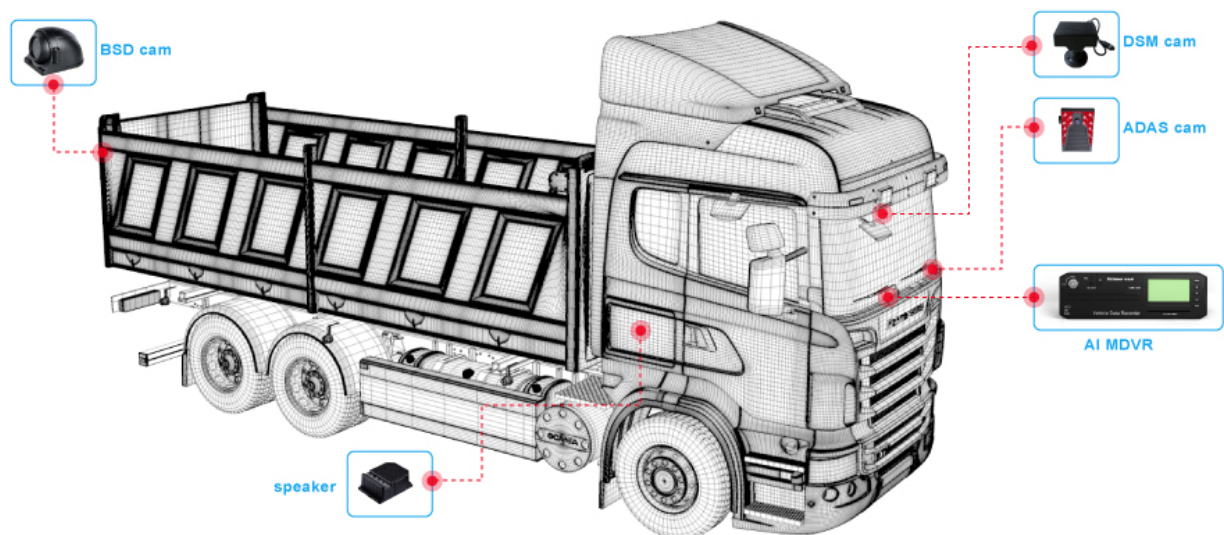


**BSD (Blind Area Detection)**  
 3-level pre-warnings Distinguish Moving Objectives Intelligently

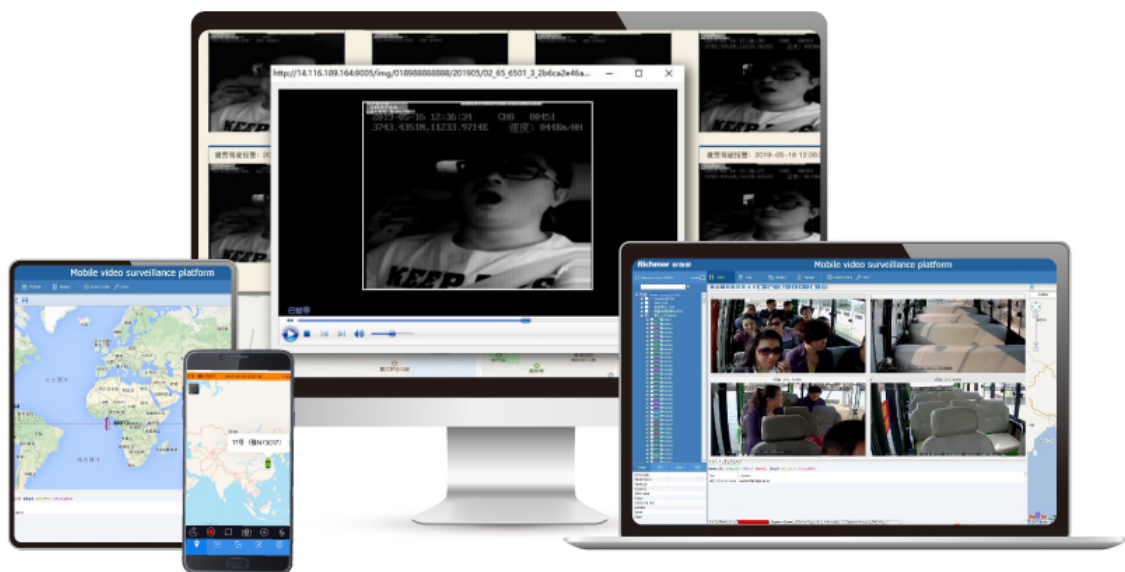


**Installation Diagram** BSD camera supports installing on the left/right back/front side to adapt to different vehicles. Supports dual BSD detection. Quick installation and easy

parameter setup.



**AI Platform** GPS/Video/Event report PC client/Andoid APP/IOS APP/Professional player



**More AI function** The strong AI chipset enables this system futher supports below functions and more.

360°viewing



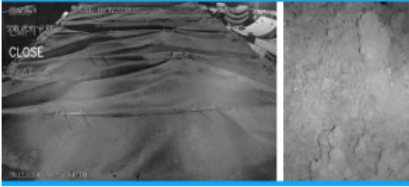
HOD detection



Seatbelt detection



Cargo detection



Using phone detection



Passenger counting



## Specification