



System Selling Points:

- 1) MDVR + AI All-In-One. Monitoring and Enhance Driving Safety at the same time.
- 2) Strongly Support ADAS+DSM+BSD. Further support HOD, 360 degree view, etc.
- 3) 8 channel full HD (1080P) video recording, H.265.
- 4) World first AI MDVR, 1.2T computing NPU ensures high accuracy and stable performance.

Send us inquiry to get complete product presentation and competitive price!

Applications

Widely applied in bus, coach, truck, logistics field.





What does this system combine?

MDVR + ADAS cam + DSM cam + BSD cam + inner&outer Speaker



AI-Chipset MDVR 8CH Full HD + H.265 + GPS + 3G/4G + WIFI (optional)

Algorithm is written inside the MDVR chipsets.



ADAS(Advanced Driving Assistance System)

Collision Warning/Passenger Detection/Lane Departure Warning Enhance driving safety, Avoid accidents!!



DSM(Driver Status Monitoring) Behavior Detection:
Fatigue/Distracted/Smoking/Calling supported Language:
English/Russian/Spanish/Portuguese/customized

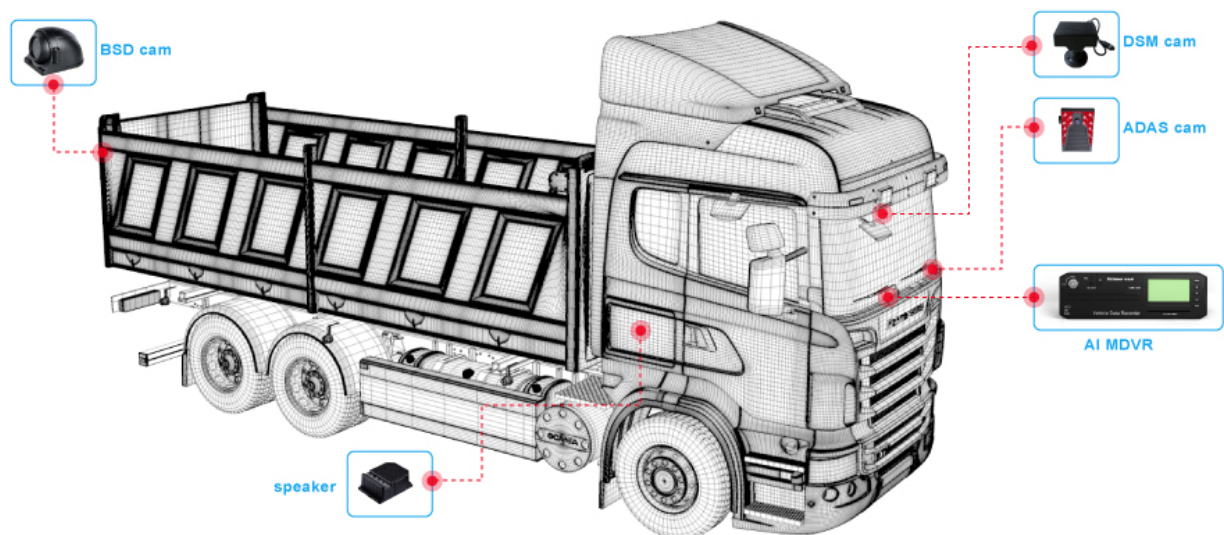


BSD (Blind Area Detection)
 3-level pre-warnings Distinguish Moving Objectives Intelligently

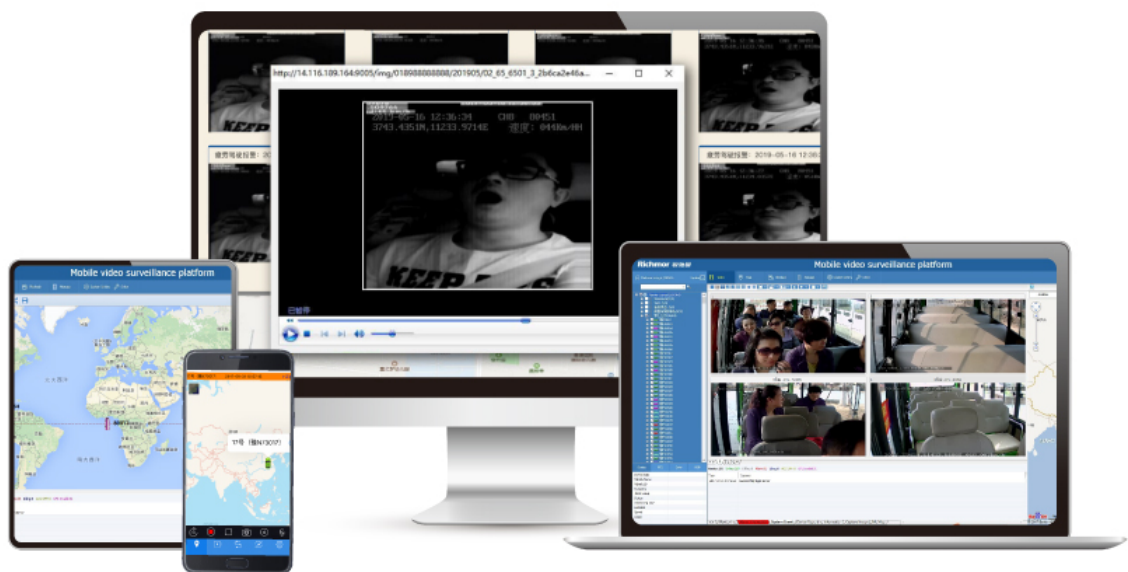


Installation Diagram BSD camera supports installing on the left/right back/front side to adapt to different vehicles. Supports dual BSD detection. Quick installation and easy

parameter setup.



AI Platform GPS/Video/Event report PC client/Andoid APP/IOS APP/Professional player



More AI function The strong AI chipset enables this system futher supports below functions and more.

360°viewing



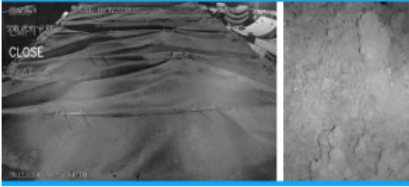
HOD detection



Seatbelt detection



Cargo detection



Using phone detection



Passenger counting



Specification