



## Main Features

- 1) DSM+ADAS AI function.
- 2) H.265 compression, save storage and 3G/4G data traffic cost.
- 3) Easy installation, 1/5 of normal time.
- 4) Integrated speaker, sound pick up, faced forward camera.
- 5) Support Portuguese, Spanish and English.  
Other language customization.

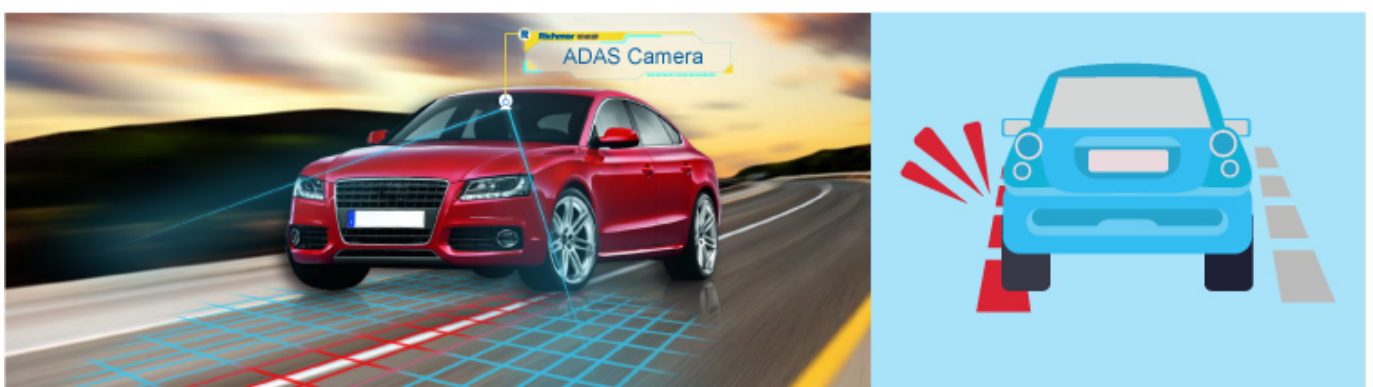
## DSM function

DSM stands for driver status monitoring. Detection including smoking, calling, distraction, fatigue, leaving seat, etc.



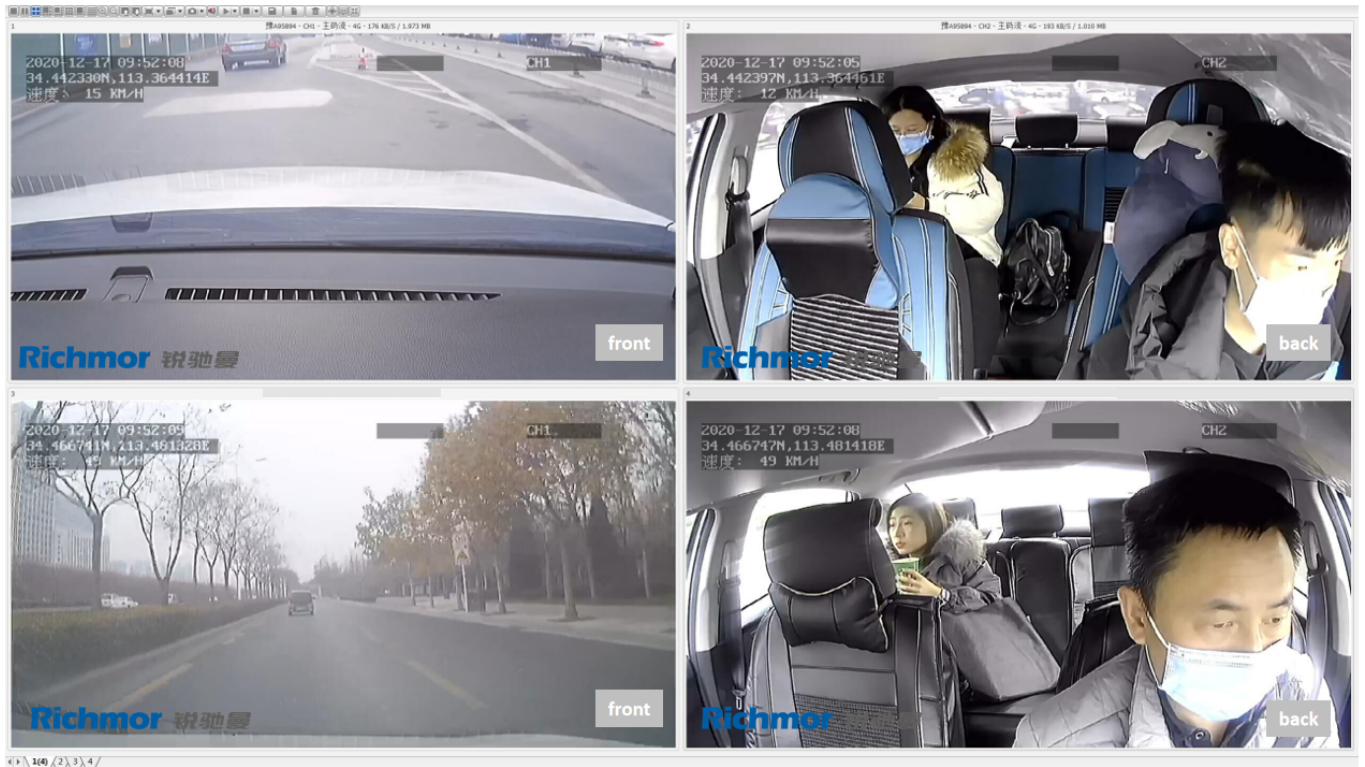
## ADAS function

ADAS stands for advanced driving assistance system. It detects potential collision or danger through front view and gives pre-warning to driver. Detection includes forward collision warning(FCW), lane departure warning(LDW), headway monitoring warning(HMW).



## Management Platform

Using CMSV6 and Richmor platform for fleet management.  
Support Android app, PC client, IOS client to remotely view.  
Support API/SDK integration.



## Easy Installation

Simple wire bunch, use 3M glue to be pasted to windshield.

Easy installation only take 1/5 of normal time. Save time and labor cost.

